

WATERJET SURGERY

MONOPOLAR APPLICATOR

**MONOPOLAR APPLICATOR WITH COMBINED
WATERJET SURGERY AND ELECTROSURGERY FUNCTIONS
SAVES OPERATING TIME.**



ERBE

Perfection for Life

WATER MEETS ELECTRICITY. A SPARKLING IDEA.



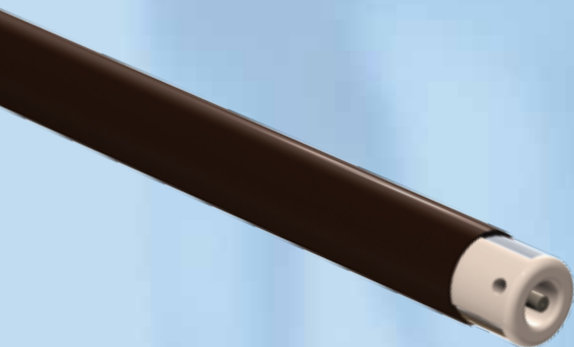
No. 20150-036

With the **Monopolar Applicator** the surgeon gets a grip with both functions. Depending on the personal working style, the surgeon can either activate the two functions alternately or combine the electrosurgery function with the waterjet function.

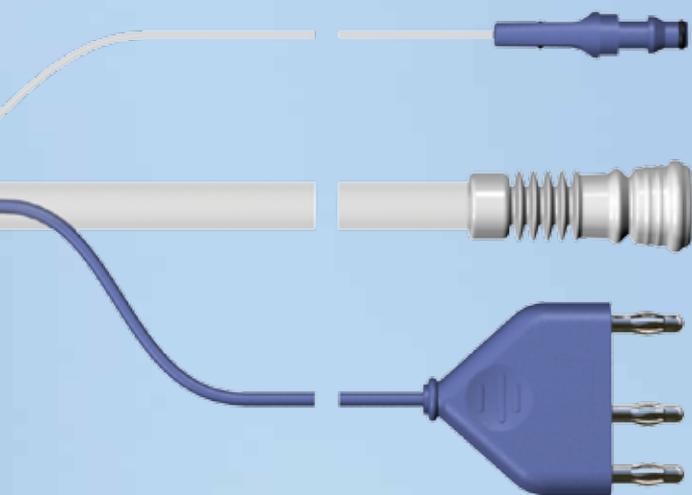


Electrosurgery is activated with the blue coagulation button. We recommend the **SWIFT COAG** and **FORCED COAG** modes on the VIO system.

The waterjet is activated using the footswitch with the effect levels recommended for the respective application.



The special positioning of the coagulation electrodes on the applicator's ceramic tip allows coagulation to be applied precisely. As a result, thermal damage to adjacent structures is largely avoided.



The advantages of the Monopolar Applicator at a glance:

- ✦ Combination function of waterjet with electrosurgery
- ✦ Faster dissection, shorter operating times, fewer clips required
- ✦ Less bleeding, less need for blood transfusions
- ✦ Good visibility of the surgical site, also as a result of the suction integrated in the applicator
- ✦ Lower lateral heat generation preserves the adjacent tissue

Faster dissection in liver surgery

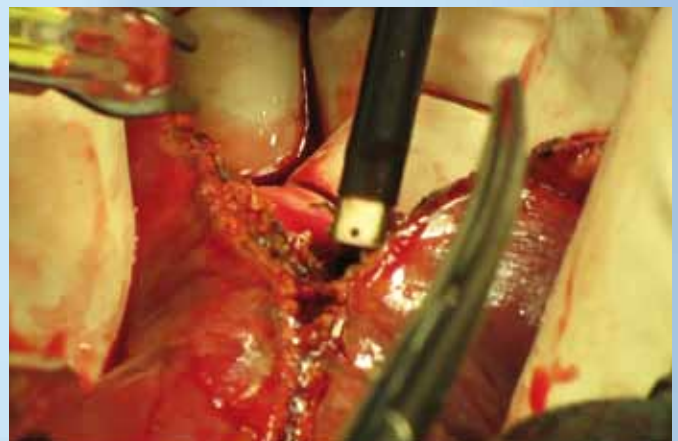
With the waterjet function, the blood vessels and bile ducts are dissected selectively. As soon as the blood vessels are dissected, they are coagulated with HF current. The instrument's dual function means that no instrument switching is necessary. The dissection process is accelerated and the bleeding, which is already low as a result of the technique, is further reduced. Coagulation is more homogenous, with less necrosis. The Monopolar Applicator thus minimizes the need for blood transfusions. For the patient this is another aspect contributing to the safety of the procedure.

The surgeon has a good view of the operating field throughout the entire procedure, also thanks to the suction integrated in the applicator. And a good view means greater safety of the procedure.

Further application areas include urology, e.g. heminephrectomy, and general surgery.



Dissection of parenchymal tissue in liver surgery.



The constant presence of HF coagulation allows bleeding to be stopped immediately (Photo source: Prof. H.-G. Rau, Dachau Hospital).

ELECTROSURGERY
VESSEL SEALING
ARGON PLASMA COAGULATION
CRYO SURGERY
WATERJET SURGERY

ERBE Elektromedizin GmbH
Waldhoernlestrasse 17
72072 Tuebingen
Germany
Phone +49 7071 755-0
Fax +49 7071 755-179
info@erbe-med.com
www.erbe-med.com



ERBE

Perfection for Life