



**erbe**  
power your performance.



# APCapplicator

All functions in one hand

# All functions at your fingertips

The APCapplicator is a multimodality electrosurgical instrument. In addition to "standard" non-contact argon plasma coagulation, other electrosurgical options are integrated into the handpiece: traditional cutting and coagulation with spatula or needle electrode or argon-assisted modalities as desired.

The APCapplicator will convince you too – like virtually all users from a wide range of specialities.

## WHY APCapplicator?

- ☑ Convenient activation of all functions with one hand
- ☑ Light-weight ergonomic design\*
- ☑ ReMode® function: allows users to toggle between modes and settings from the operating field
- ☑ Instrument detection: Experienced starting settings and optimized argon flow recognized (plug and operate)
- ☑ Sterile single-use product with integrated membrane filter\*: Immediate OR availability. No reprocessing required

93 %

OF USERS  
WOULD RECOMMEND  
THE PRODUCT TO A  
COLLEAGUE

73 %

OF USERS SAY THAT  
ONE-HAND OPERATION  
IS AN ADVANTAGE

## ADVANTAGES OF ARGON PLASMA COAGULATION

- ☑ Rapid superficial coagulation for uniform hemostasis and ablation
  - particularly for parenchymal tissue (e.g. liver, kidneys) and for diffuse bleeding
  - across larger resection surfaces
- ☑ Non-contact technique
- ☑ Homogenous target tissue effect with limited coagulation depth

## ADVANTAGES OF ARGON-ASSISTED ELECTROSURGERY

- ☑ Minimum smoke plume development, improved view of the operating field
- ☑ Minimum carbonization, improved wound healing
- ☑ Variable argon flow, for various applications

# The 5 application options



1 Application with APC

**Argon plasma coagulation, non-contact**  
efficient, homogenous coagulation with limited penetration

## Applications with argon gas



**Argon-assisted cutting**  
in chemically inert argon gas



**Argon-assisted coagulation**  
in chemically inert argon gas

## Applications without argon gas\*



**Electrosurgical cutting**  
without argon gas



**Electrosurgical coagulation**  
without argon gas

\* At an argon flow of 0 l/min.

# Clinical Versatility\*

The APCapplicator with its multiple functions can be used for many surgical procedures, whether open or laparoscopic. From incision and mobilization of the target organ, to tissue ablation, and homogenous coagulation – the APCapplicator can do it all. The ReMode® function allows you to toggle between settings and modes without having to change instruments.

## Gynecology



Coagulation of mammary gland tissue with the APC function

---

### BREAST SURGERY

---

The user dissects the outer layers of the breast and the mammary gland tissue with the APCapplicator and a needle or spatula electrode with "argon-assisted cutting". The argon gas keeps the view of the dissection plane clear.

---

### BREAST SURGERY, COAGULATION OF DIFFUSE BLEEDING

---

The non-contact argon plasma coagulation enables rapid, homogenous coagulation of diffuse bleeding with low penetration. The APCapplicator provides optimal functions for all phases of the surgery for applications with non-contact APC or argon-assisted cutting or coagulation.

## Visceral surgery



Coagulation of the gall bladder base with the APC function

---

### LAPAROSCOPIC CHOLECYSTECTOMY

---

When mobilizing the gall bladder the "argon-assisted cutting" function enables clean dissection with minimal bleeding and clear visualization of the surgical site.

---

### LAPAROSCOPIC CHOLECYSTECTOMY, COAGULATION OF BLEEDING

---

Local or diffuse bleeding of the gall bladder bed can be easily coagulated with non-contact APC function.

---

### PARTIAL LIVER RESECTION

---

The Glisson's capsule is incised with argon-assisted cutting.

For the resection margin of the highly vascularized liver, the non-contact APC function provides homogenous and uniform hemostasis with minimal coagulation depth.

\*Based on performed procedures (user acceptance testing 03/2016)

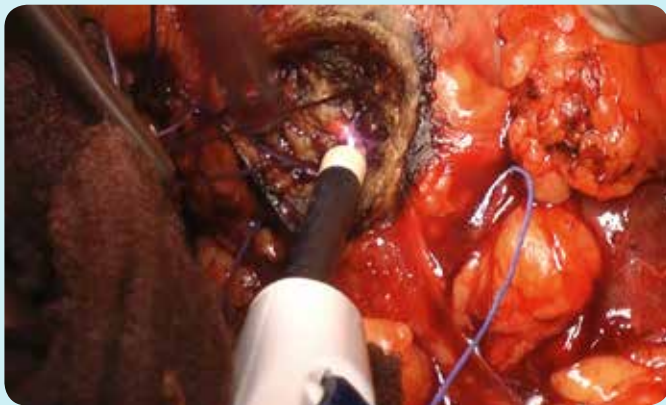


## The workstation for APC and argon-assisted electrocautery

The modules of the VIO®/APC workstation system are engineered and developed for the optimal application of both argon plasma coagulation and argon-assisted electrocautery. The APC and electrocautery modes are selected and activated via the VIO® display. The stored experienced starting settings can be configured and saved to your specific requirements.



## Urology



*Homogenous and wide-area coagulation of a kidney resection bed*

### PARTIAL NEPHRECTOMY

The resection surfaces of the outer kidney parenchyma can be coagulated homogeneously and over a wide area with the APC function.

## Thoracic surgery



*Coagulation with APC during a lung resection*

### LOBECTOMY

Resection areas of the lung are coagulated with the non-contact APC function, as is diffuse bleeding on the thoracic wall.

### Additional applications for non-contact APC\*

- ☑ Open-surgery adrenalectomy (for coagulation of the posterior peritoneal wall or kidney capsule)
- ☑ Esophagus resection
- ☑ Open-surgery hemicolectomy
- ☑ Whipple operation (partial pancreaticoduodenectomy, a Kausch-Whipple procedure)

*\*Based on performed procedures (user acceptance testing 03/2016)*

# APCapplicator

## Ergonomics and efficiency

*With the APCapplicator, all functions are at your fingertips. The light-weight and ergonomic design promotes more efficient use with limited instrument exchange. Simply connect your instrument to get started.*

---

### SHAFT TUBE

01

Exposed electrode length can be adjusted (0–14 mm) while keeping the distal working distance unchanged

---

### SHAFT ROTATION

02

The spatula electrode can be rotated for use at any angle



---

### ROTARY WHEEL

03

The shaft can be extended and retracted

---

### CUT/COAG BUTTONS

04

---

### REMODE® BUTTON

05

Enables convenient toggling between program settings and modes

---

### INSTRUMENT DETECTION

06

Connect the APCapplicator and start working; experienced starting settings can be configured

---

### INTEGRATED MEMBRANE FILTER

07

Patented safety design\*

---

### FLEXIBLE CONNECTING CABLE

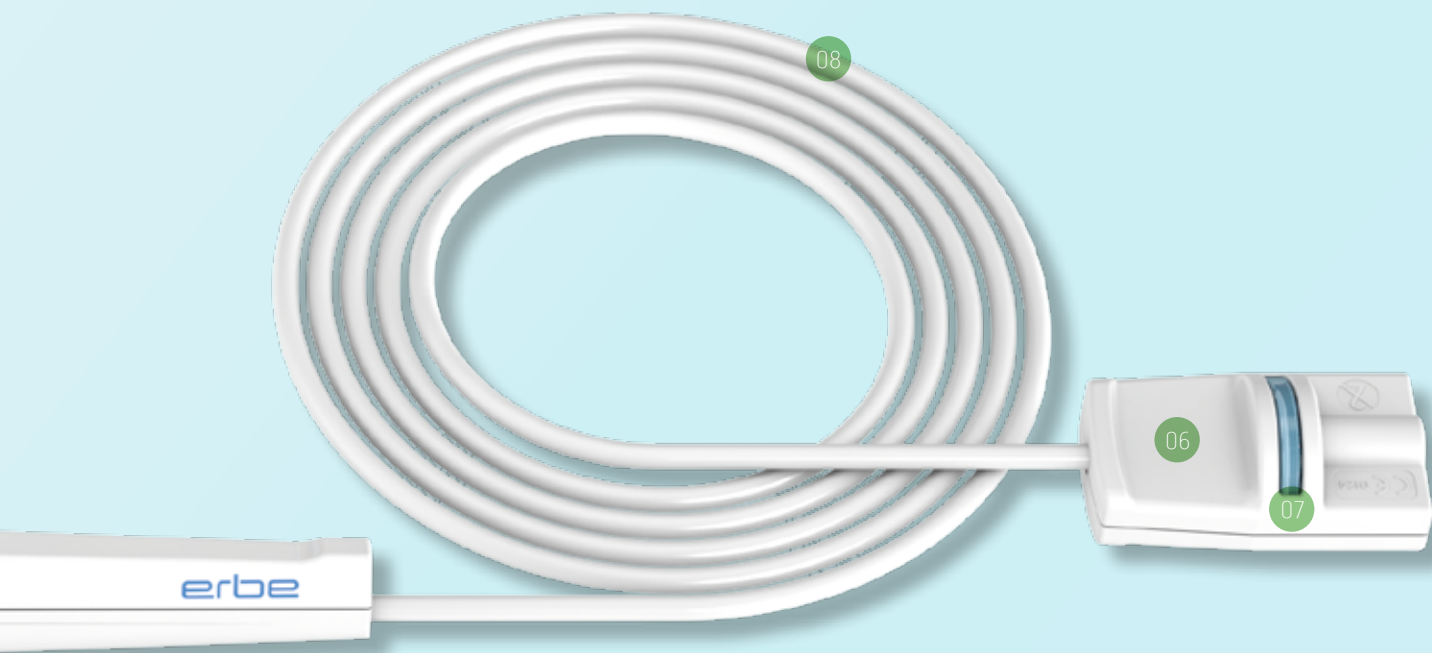
08

Improved ease of use – like working “virtually without a cable”

## Accessories for all models

**Adapter for connection to APC 2**  
with standard APC socket  
**No. 20132-249**





## A varied portfolio

APCapplicator, with membrane filter, rigid, slidable shaft,  $\varnothing$  5 mm, ReMode® button, cable 3 m

**APCapplicator, 35-mm shaft**  
Spatula electrode  
No. 20132-250

**APCapplicator, 100-mm shaft**  
Spatula electrode  
No. 20132-252

**APCapplicator, 350-mm shaft**  
for laparoscopy, spatula electrode  
No. 20132-254

**APCapplicator, 35-mm shaft**  
Needle electrode  
No. 20132-251

**APCapplicator, 100-mm shaft**  
Needle electrode  
No. 20132-253

**APCapplicator, 350-mm shaft**  
for laparoscopy, needle electrode  
No. 20132-255

APCapplicator, with membrane filter, malleable, fixed shaft,  $\varnothing$  5 mm, cable 3 m

**APCapplicator, 100-mm shaft,**  
1 coagulation button  
No. 20132-256



#### **Important information**

We have prepared this document with care. Nonetheless, we cannot completely rule out errors in this document.

The information, recommendations and other data („Information“) contained in this document reflect our state of knowledge and the state of science and technology at the time of preparing the document. The information is of a general nature, non-binding and serves solely for general information purposes and does not represent instructions for use or notes on application.

The information and recommendations contained in this document do not constitute any legal obligations by Erbe Elektromedizin GmbH as well as their associated companies („Erbe“) or any other claims against Erbe. The information does not represent a guarantee or other quality statement, these require the express contractual arrangement with Erbe in individual cases. Erbe shall not be liable for any type of damage resulting from following information given in this document, regardless of the legal reason for liability.

Every user of an Erbe product is responsible for checking the respective Erbe product for its properties as well as the suitability for the intended type of application or intended purpose in advance. The suitable type of application of the respective Erbe product is given by the user manual and the notes on use for the corresponding Erbe product. The user is obliged to check whether the existing user manual and the notes on use correspond with the status for the specific Erbe product. The devices may only be used according to the user manual and the notes on use.

The information on setting values, application sites, duration of application and the use of the respective Erbe product is based on the clinical experience of physicians independent from Erbe. They represent guidelines which need to be checked by the user for their suitability for the actual planned application. Depending on the circumstances of an actual application case, it may be necessary to deviate from the information provided. The user has to check this on his/her own responsibility in each case when using an Erbe product. We wish to point out that science and technology is constantly subject to new developments arising from research and clinical experience. For this reason it may be necessary for the user to deviate from the information provided in this document.

This document contains information about Erbe products which may possibly not be approved in a specific country. The user of the respective Erbe product is obliged to inform him/herself whether the Erbe product he/she is using is legally approved in his/her country and/or if legal requirements or restrictions for use possibly exist and to which extent.

This document is not intended for users in the USA.

Erbe Elektromedizin GmbH  
Waldhoernlestrasse 17  
72072 Tuebingen  
Germany

Phone +49 7071 755-0  
Fax +49 7071 755-179  
info@erbe-med.com  
erbe-med.com