

ELECTROSURGERY
ERBE PATIENT PLATES NESSY Ω [®]
NESSYPLATE™, MONOPLATE™

ERBE PATIENT PLATES:
INCREASED SAFETY IN MONOPOLAR ELECTROSURGERY.



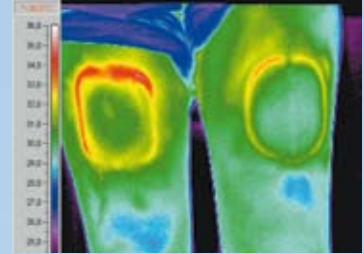
ERBE

Perfection for Life

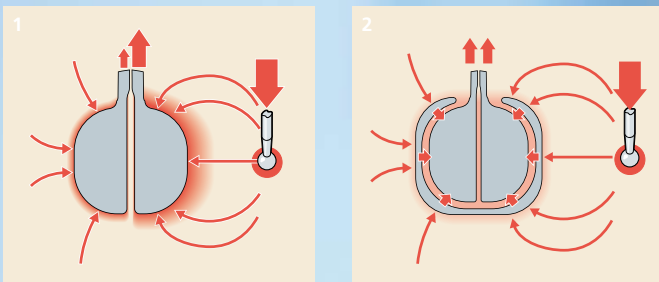
ERBE NESSY Ω ® – THE SOLUTION WITH THE RING FOR ALL-ROUND SAFETY.

The equipotential ring of the NESSY Ω allows the patient plate to be placed on a patient irrespective of the direction of the operative site. The high-frequency monopolar current flowing to the patient plate is distributed evenly over the split-pad contact surface via the outer ring. High current densities with partial warming are avoided. This means that the NESSY Ω offers more safety – with a smaller contact area. And positioning the patient plate is made easier when treating children.

Like all ERBE patient plates the NESSY Ω is optimally adapted to the NESSY function of the ICC and VIO units. It offers increased safety and is even more user-friendly during applications.



NESSY Ω (right) and conventional patient plate (left): comparison of thermal effects.



1) Patient plate without an equipotential ring: partial warming at the surface of the patient plate along the side facing the operative site (leading-edge effect).

2) The equipotential ring distributes the electrosurgical current evenly over the surface. NESSY Ω can be placed on a patient irrespective of the direction of the operative site.



ERBE NESSY Ω
electrode surface 85 cm²
(equipotential ring 23 cm²)
for VIO, ICC, ACC

No. 20193-082

ERBE NESSY Ω
with 4 m cable (not shown)
and 2-pin plug

No. 20193-083

**Suitable connecting cables
(with connecting clip)**

Patient plate cable
for VIO, ICC, ACC, standard,
for split-pad plate,
length 4 m
length 5 m

No. 20194-077

No. 20194-078

Patient plate cable
for VIO, ICC, ACC, international,
for single-pad plate,
length 4 m
length 5 m

No. 20194-079

No. 20194-086

Patient plate cable
for VIO, ICC, ACC, international,
for split-pad plate,
length 4 m
length 5 m

No. 20194-080

No. 20194-087

Advantages of NESSY Ω at a glance

- ✦ Split-pad effective contact surface 85 cm² + equipotential ring 23 cm²
- ✦ High current densities and partial warming are largely avoided
- ✦ Can be positioned irrespective of the direction of the operative site
- ✦ Can be used to treat both adults and children
- ✦ Optimized for use with ERBE VIO and ICC technology
- ✦ Electrode is well tolerated by the skin (bio-compatible)
- ✦ With its thin, flexible material the plate adapts well to the shape of the body

ERBE MONOPlate AND NESSYPlate – BETTER APPLICATION PROPERTIES THROUGH HYDROGEL CONTACT SURFACE.

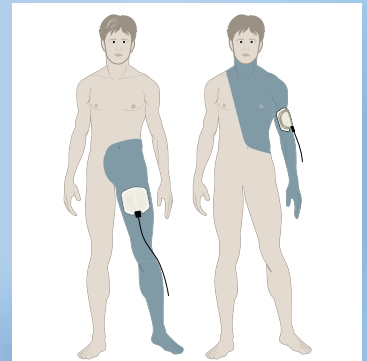
Like the NESSY Ω the electrode surfaces of the ERBE MONOPlate and the NESSYPlate consist of a highly adhesive contact hydrogel, which ensures that contact is made over the entire surface. This makes it safe to use even under difficult conditions and during longer operative interventions. The hydrogel layer can absorb and store moisture. It has a neutral pH and is eudermic and can be easily removed after the operation, despite its good adhesive properties. All patient plates listed in the brochure contain neither latex nor nickel.

The ERBE patient plates MONOPlate and NESSYPlate are available in the following basic versions:

- without cable
- with 3 m cable and 2-pin plug

The shape and form of the plates have been optimized for use with either adults or infants.

We recommend placing all MONOPlate and NESSYPlate versions so that the edge of the long side faces in the direction of the operative site. This avoids partial high current densities (leading-edge effect).

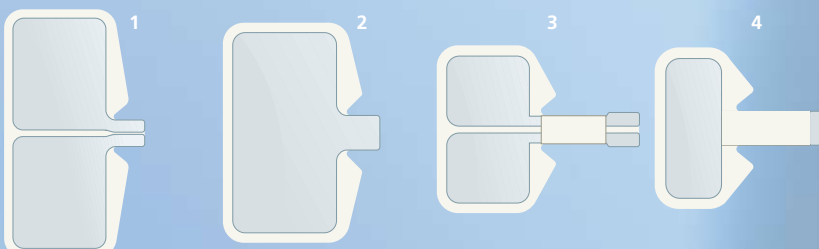


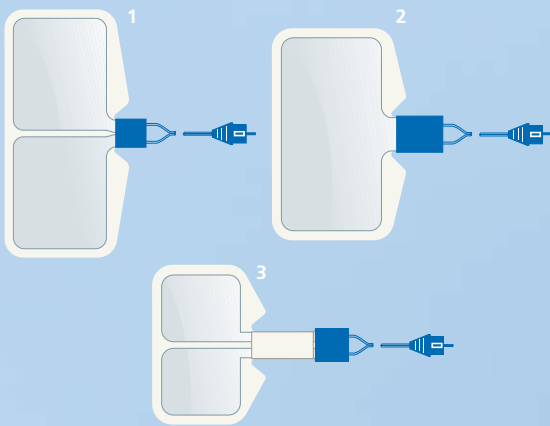
The MONO-/NESSYPlates should be placed as close as possible to the operative site – with the long side facing the site.

ERBE NESSYPlate 170 A = 168 cm ² , split pad, with contact tongue	1 No. 20193-070
ERBE MONOPlate 140 A = 136 cm ² , single pad, with contact tongue	2 No. 20193-072
ERBE NESSYPlate 70, for infants A = 72 cm ² , split pad, with longer contact tongue	3 No. 20193-071
ERBE MONOPlate 40, for infants A = 40 cm ² , single pad, with longer contact tongue	4 No. 20193-073

Connecting cables

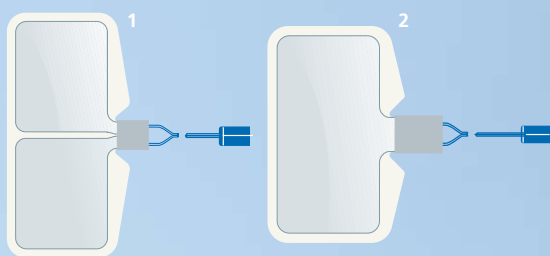
Patient plate cable for VIO, ICC, ACC standard, for split-pad NE, connecting clip length 4 m length 5 m	No. 20194-077 No. 20194-078
Patient plate cable for VIO, ICC, ACC international, for single-pad plate, connecting clip length 4 m length 5 m	No. 20194-079 No. 20194-086
Patient plate cable for VIO, ICC, ACC, non-ERBE units, international, for split-pad plate, connecting clip length 4 m length 5 m	No. 20194-080 No. 20194-087





With 3 m cable and 2-pin plug

ERBE NESSYPlate 170 A = 168 cm ² , split pad, with cable	1 No. 20193-074
ERBE MONOPlate 140 A = 136 cm ² , single pad, with cable	2 No. 20193-076
ERBE NESSYPlate 70, for infants A = 72 cm ² , split pad, with cable	3 No. 20193-075



With 0.4 m cable and Molex plug

ERBE NESSYPlate 170 A = 168 cm ² , split pad, with cable, Molex plug	1 No. 20193-077
ERBE MONOPlate 140 A = 136 cm ² , single pad, with cable, Molex plug	2 No. 20193-079

Connecting cables

Patient plate cable for VIO, ICC, ACC standard, for split-pad plate, with Molex plug length 4 m	No. 20194-072
Patient plate cable for VIO, ICC, ACC, non-ERBE units, international, for split-pad plate, with Molex plug length 4 m	No. 20194-074

For other patient plates, e.g. silicon electrodes, please refer to our catalogue for electrosurgical accessories.

ERBE Elektromedizin GmbH
Waldhoernlestrasse 17
72072 Tuebingen
Germany
Phone +49 7071 755-0
Fax +49 7071 755-179
sales@erbe-med.de
www.erbe-med.com



Perfection for Life