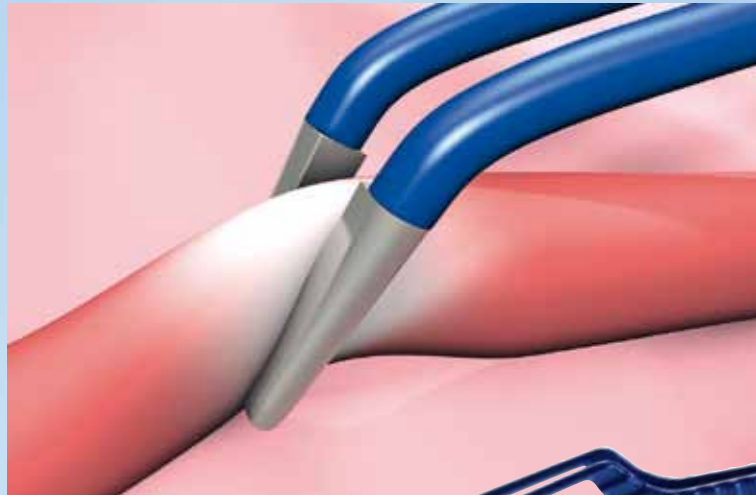


ELECTROSURGERY

BIPOLAR PREMIUM FORCEPS
BIPOLAR IRRIGATION FORCEPS

THE ERBE FORCEPS RANGE
WITH ITS NON-STICK EFFECT.



ERBE

Perfection for Life

ADVANTAGES OF THE NON-STICK EFFECT.



During bipolar electro-surgical coagulation an unwanted sticking effect can occur when the forceps' tips adhere to the tissue. This carries a risk of inadvertent tearing open of coagulated vessels. In addition, tissue sticking to the forceps adversely affects the continued coagulation. Sticking is markedly reduced with the automatic power regulation provided by the ERBE VIO unit technology and the use of Soft Coagulation with AUTO STOP. The new PREMIUM forceps and irrigation forceps additionally reduce sticking.

The forceps are available in addition to the standard models (s. catalogue of electro-surgical accessories).

The ERBE bipolar forceps are available in various lengths and shapes for different surgical and anatomical requirements.



Coagulation of blood vessels

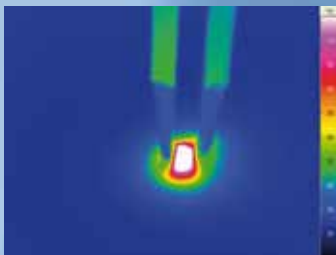


Superficial coagulation

Advantages

- ✦ Minimal adhesion of tissue
- ✦ Minimal tearing of coagulated tissue
- ✦ Precise and safe operative procedure
- ✦ Maximum saving of time due to minimal time required for cleaning
- ✦ Safe coagulation due to consistent energy output

THE FORCEPS WITH THE COOL-DOWN EFFECT. MINIMIZES TISSUE ADHESION TO THE BRANCHES.



Thermography illustrates the low temperature level of the forceps' tips during coagulation

The reusable PREMIUM forceps make it easy to coagulate tissue. Sticking effects on the tips of the forceps are reduced to a minimum.

The trick lies in a special alloy with high temperature conductivity to draw the heat away from the forcep tip and to prevent overheating. Heat accumulation and the resulting adhesion of coagulate is significantly reduced. The abraded and matt-finished surface of the forceps' tips allows tissue and vessels to be grasped safely. At the same time potential light reflections are reduced, improving the visibility at the operating site when working under a microscope.

The new forceps are available in all popular shapes and sizes and can be used in any surgical discipline.

Areas of application

- ✦ All surgical disciplines

Special benefits in

- ✦ Neurosurgery
- ✦ ENT
- ✦ Oral and maxillofacial surgery
- ✦ Plastic surgery

The benefits at a glance

- ✦ Limited tissue adhesion due to high temperature conductivity
- ✦ Long instrument life due to high-quality alloy
- ✦ Targeted precise coagulation due to precise design of the tips
- ✦ Firm grasping of tissue due to abraded gripping surface
- ✦ Less time required intraoperatively for cleaning
- ✦ Good visibility at the operating site due to reduced light reflections (e.g. during preparation under a microscope)

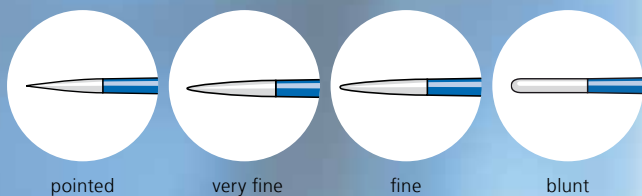
OVERVIEW OF THE PREMIUM FORCEPS.



Pinpoint grasping with innovative tip geometry

Bipolar forceps PREMIUM – STRAIGHT		
Order No.	Length	Tip
20195-501	12 cm	pointed 0.2 mm
20195-502	12 cm	very fine 0.4 mm
20195-503	12 cm	fine 0.7 mm
20195-504	12 cm	fine 0.7 mm; angled
20195-505	18.5 cm	pointed 0.2 mm
20195-506	18.5 cm	very fine 0.4 mm
20195-507	18.5 cm	fine 0.7 mm
20195-508	18.5 cm	blunt 1.0 mm
20195-509	18.5 cm	blunt 1.0 mm; angled
20195-510	20 cm	pointed 0.2 mm
20195-511	20 cm	very fine 0.4 mm
20195-512	20 cm	blunt 1.0 mm
20195-513	20 cm	blunt 1.0 mm; angled
20195-514	20 cm	blunt 2.0 mm; angled
20195-515	23 cm	blunt 2.0 mm
20195-516	26 cm	blunt 1.0 mm; angled

Bipolar forceps PREMIUM – BAYONET		
Order No.	Length	Tip
20195-531	15.5 cm	pointed 0.2 mm
20195-532	15.5 cm	very fine 0.4 mm
20195-533	15.5 cm	fine 0.7 mm
20195-534	17 cm	pointed 0.2 mm
20195-535	17 cm	blunt 1.0 mm
20195-536	20 cm	very fine 0.4 mm
20195-537	20 cm	fine 0.7 mm
20195-538	20 cm	blunt 1.0 mm
20195-539	20 cm	blunt 1.2 mm
20195-540	20 cm	blunt 2.0 mm
20195-541	20 cm	blunt 1.2 mm; angled downwards
20195-542	20 cm	blunt 1.2 mm; angled upwards
20195-543	23 cm	pointed 0.2 mm
20195-544	23 cm	very fine 0.4 mm
20195-545	23 cm	fine 0.7 mm
20195-546	23 cm	blunt 1.0 mm
20195-547	23 cm	blunt 1.2 mm
20195-548	23 cm	fine 0.7 mm; angled upwards
20195-549	23 cm	fine 1.2 mm; angled upwards
20195-550	23 cm	fine 0.7 mm; angled downwards
20195-551	25 cm	pointed 0.2 mm
20195-552	25 cm	very fine 0.4 mm
20195-553	25 cm	fine 0.7 mm
20195-554	25 cm	blunt 1.0 mm
20195-555	25 cm	blunt 1.2 mm
20195-556	25 cm	fine 0.7 mm; angled upwards



pointed

very fine

fine

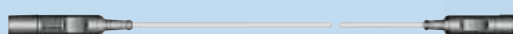
blunt

OVERVIEW OF IRRIGATION FORCEPS AND CONNECTING CABLES.



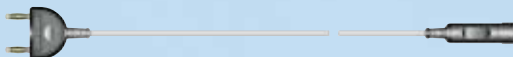
Bipolar irrigation forceps – STRAIGHT		
Order No.	Length	Tip
20195-150	20 cm	blunt 1.5 mm

Bipolar irrigation forceps – BAYONET		
Order No.	Length	Tip
20195-151	20 cm	fine 0.5 mm
20195-152	20 cm	blunt 1.0 mm
20195-153	23 cm	fine 0.5 mm
20195-154	23 cm	blunt 1.0 mm



Connecting cable for bipolar forceps
for VIO, ICC, ACC

Length 4 m **No. 20196-045**
Length 5 m **No. 20196-057**



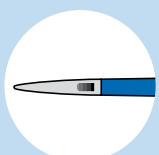
Connecting cable for bipolar forceps
for VIO, ICC, ACC, international

Length 4 m **No. 20196-053**
Length 5 m **No. 20196-061**

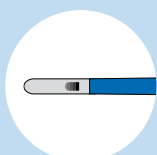


Connecting cable for bipolar forceps
for Valleylab

Length 4 m **No. 20196-055**

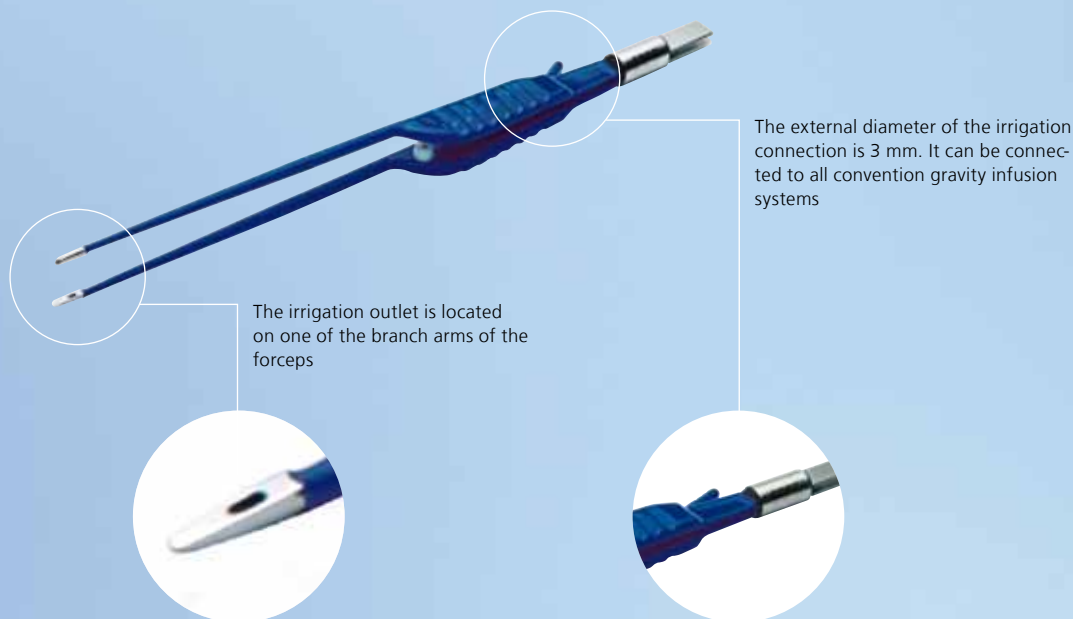


fine



blunt

THE FUNCTION OF THE BIPOLAR IRRIGATION FORCEPS.



Irrigation during coagulation

The irrigation channel passes through the lower part of the forceps ending in an outlet in one of the branch arms. Irrigation with an NaCl solution has several positive effects:

- ✦ Effective coagulation
- ✦ No damage or tearing of the coagulated vessels after coagulation
- ✦ Even coagulation with constant power output
- ✦ NaCl solution optimizes the electrical contact

Due to these advantages the surgical procedure can be carried out in a shorter period of time as the instrument rarely requires cleaning intra-operatively. The irrigation solution is connected to a standard infusion apparatus with an adjustable drip rate via the cylindrical clip.

The forceps can be disinfected in the thermodisinfectant at a temperature of 95°C or in the autoclave at a temperature of 138°C.

ERBE Elektromedizin GmbH
Waldhoernlestrasse 17
72072 Tuebingen
Germany
Phone +49 7071 755-0
Fax +49 7071 755-179
sales@erbe-med.de
www.erbe-med.com



ERBE

Perfection for Life